



2017 Sigma Beta Club National
Leadership Conference
Wayne State University
Detroit, Michigan

FACT SHEET

Registration

**Sigma Beta Club (SBC)
Member**
\$325

**SBC
Advisor**
\$275
Deadline
Wednesday, May 31st

**SBC
Parent**
\$275
Deadline
Wednesday, May 31st

IHQ will provide all registrants with a Conclave Welcome Letter & Special registration form, which will include three (3) meal function option events. SBC Advisors must (only) mail in Conclave registration form to IHQ. Upon receipt, a confirmation letter will be provided on the meal function options that a SBC Advisor selected.

Background Screening

1. All SBC Advisors and SBC Parent(s) attending the 2017 National Sigma Beta Club Leadership Conference will need to complete their background checks by **Wednesday, May 31st** through [National Center for Safety Initiatives \(NCSI\)](#) by National Sigma Beta Club Foundation (**contact your perspective Regional Coordinator for the access code identifying your Region**).
2. If a SBC Advisor has never done a background screening through NCIS then he must pay the full cost at their own expense by **Wednesday, May 31st**.

Housing

SBC Members and Advisors will be staying on the campus of Wayne State University in Detroit at the [Towers Residential Suites](#) (July 19-23rd), which is quad apartment style suite that includes the following:

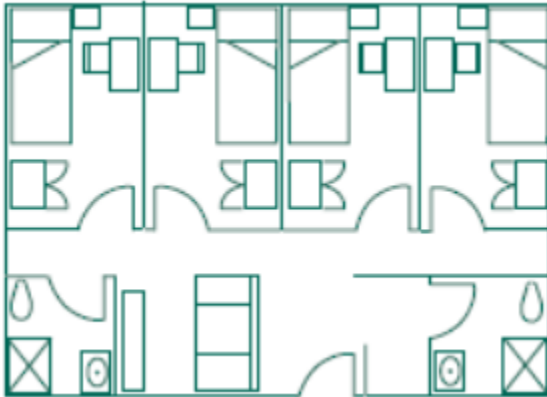
- Furnished single bedroom
- Vanity & sink in every suite
- Private suite shower & bathroom
- Kitchen, living room, and dining room in each suite



2017 Sigma Beta Club National
Leadership Conference
Wayne State University
Detroit, Michigan

Housing (cont.)

1. There will be only 4 Sigma Betas in suites (individual rooms)



2. There will be only 2 Advisors in a suite (individual rooms)

Each room within the suite will include linens, i.e. 2 sheets, 1 pillow, 1 pillowcase, 1 bath towel & 1 Washcloth.

NOTE: The rooms at the University will not be available prior to the start of the Conference. Housing will be on your own. Check-In at the Towers Residential Suites will be on July 19th at 8:00 am.

Awards

Sigma Beta Club Award Applications due by **Wednesday, May 31st** to Mr. [Mark Allmon](#)

Transportation

Buses will be provided upon arrival



2017 Sigma Beta Club National
Leadership Conference
Wayne State University
Detroit, Michigan

Point of Contact & Additional information

Please note that Regional Coordinators are first point of contact and are as follows:

James A. Spence, II

Eastern Region SBC Coordinator

Jspence698@gmail.com

(804) 501-6455

Timothy McDaniel

Gulf Coast Region SBC Coordinator

timothychrischeryl@sbcglobal.com

(214) 470-5853

Dr. Lamar Hylton

Great Lakes Region SBC Coordinator

lrhylton8@gmail.com

(443) 271-9477

Mark Allmon

Southeastern Region SBC Coordinator

sigmaknoxville@gmail.com

(865) 385-4671

Dr. Philip Harris

Southern Region SBC Coordinator

philipharris@tampasigmas.com

(727) 900-1338

Mark Hewitt

Southwestern Region SBC Coordinator

markhewittpbs1914@gmail.com

(314) 831-8877

Ian Heisser

Western Region SBC Coordinator

ian.heisser@outlook.com

(425) 269-3884

National Sigma Beta Club Foundation website <http://sigmabetaclub.org/>



2017 Sigma Beta Club National
Leadership Conference
Wayne State University
Detroit, Michigan

THINGS TO BRING LIST

Clothing

Toiletries

2 White Collared Long Sleeve Shirts	Deodorant
2 Dark Colored (Black) Slacks	Shampoo/Conditioner
2 Dark Ties (one preferred in Sigma Blue)	Soap Bar or Body Wash
Khaki and/or Dark Shorts	Extra Washcloth/Towel
Long Khaki and/or Dark Trousers	Brush/Comb
Casual Shirts /T-Shirts	Lotion
Casual Pants/Shorts	Glasses/Contacts/Eye Solution
Pajamas/Robe/Slippers	Shower Shoes
Underwear/Socks	Laundry Bag/Detergent
Casual Shoes	Light Blanket (optional)
Dress Shoes	Toilet Paper
Gym Clothes/Shoes	Lysol Spray

Additional Supplies

Alarm Clock	Small Notebook
Pens/Pencils	Ethernet Cable
Hangers	Desk Lamp/Flashlight
Health Insurance Card (although we have the medical release forms, it is a good idea to have the Chapter Advisor keep on hand)	
Any Medications (Chapter Advisors, please make sure that you are aware of any medications that your SBC Members are taking and instructions on how to take medications. In addition, please communicate this information upon sign-in. If there are any medications(s) that need to be administered, please let the Foundation Representative aware)	